

APPENDIX B
Consultation Presentation, June, 2017



Project Overview

The Project is construction of a new road requiring new tunnels, bridges and other structures in order to allow traffic capacity expansion. Construction will be undertaken in difficult topographic and geological conditions without interrupting the traffic flow.

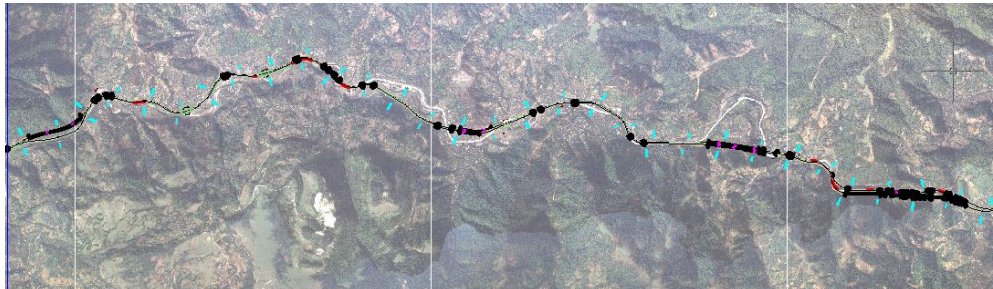
Item	Description
Road Length	41.665 km
Road Width/Number of Lanes	27m/4 lanes
Design Speed	100/80 km/h
Number of Bridges	77
Number of Tunnels	40
Construction Period	3 years

Project Location

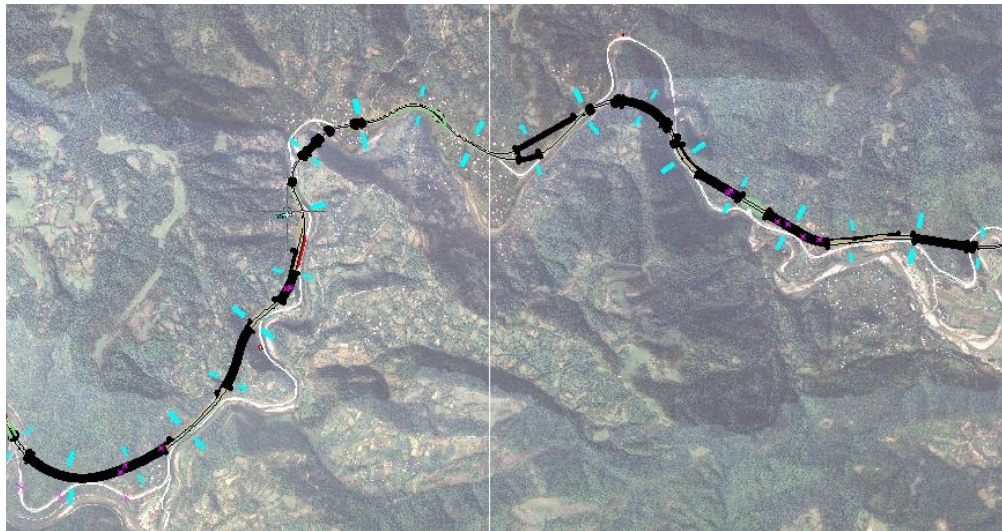
Khevi-Argveta Section of E60 Highway starts at the 9th km west from the existing Rikoti Tunnel and ends near Village Argveta. The entire section is divided in 3 Lots: F2-F3-F4

2

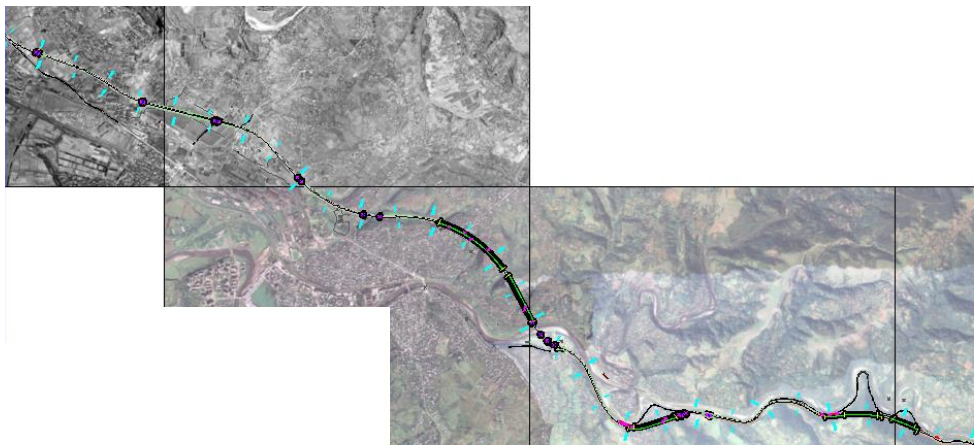
1st Lot: F2 from km 8+880 to km 24+266 Total Length = 15.4 km



3rd Lot: F4 from km 34+695 to km 50+545 Total Length = 10.4 km



2nd Lot: F3 from km 24+266 to km 34+695 - Total Length 10.4 km



Need for the Project

Transport sector development in Georgia is essential for the achievement of sustainable economic growth, alleviation of poverty and promotion of tourism.

Deterioration of transport infrastructure increases the cost of doing business, deters foreign investment, hampers transit traffic growth, and leaves segments of the population out of mainstream economic activities.

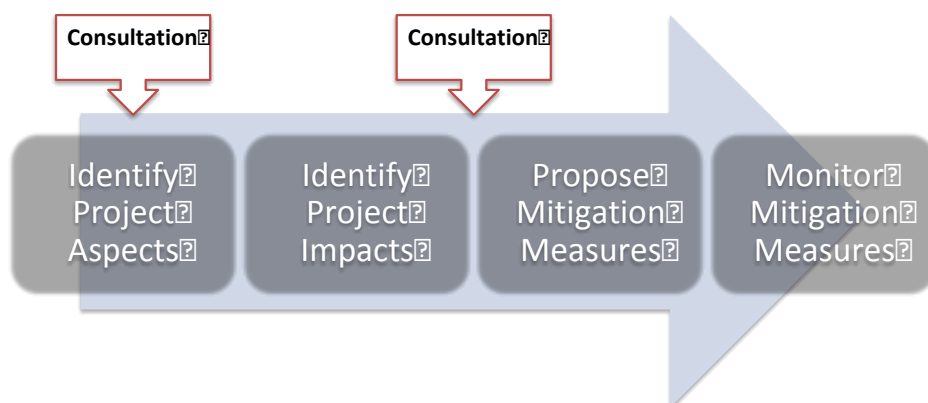
Georgia's geographical location is at the center of East-West (Black Sea and Caspian Sea) and North-South (between Russia and Turkey) transit routes.

Trade with neighboring countries is therefore an important driver of Georgia's economy.



What is EIA?

“A process for predicting and assessing the potential environmental and social impacts of a proposed project, evaluating alternatives and designing appropriate mitigation, management and monitoring measures.”



Need for Consultations

EIA of the Project is required by both Government of Georgia and the Asian Development Bank (ADB)

?

ADB specifically state:

?

“The borrower/client will carry out meaningful consultation with affected people and other concerned stakeholders, including civil society, and facilitate their informed participation.”

?

For environment category A projects, such consultations will include consultations at the early stage of EIA field work and when the draft EIA reports are available during project preparation, and before project appraisal by ADB.

?

?



Type of Consultations



Other EIA Activities

1. Collection of Baseline Data, including surveys of flora, fauna & rivers.
2. Instrumental monitoring of existing air quality, noise and water quality.
3. Review regulatory requirements.
4. Examine potential alternatives.
5. Assess impacts using tools such as impact matrices and models (air and noise).
6. Prepare of Environmental Mitigation and Monitoring Plans.



Potential Physical Impacts

Aspect	Potential Impact
Air Quality	<ul style="list-style-type: none"> Dust during construction from vehicle movement, batching plants, blasting, tunneling, etc. Vehicle and machinery emissions both during construction and operational phases of the project.
Soils	<ul style="list-style-type: none"> Spills and leaks of hazardous liquids. Poor management of borrow pits. Soil erosion during the operational phase.
Water Quality	<ul style="list-style-type: none"> Spills and leaks of hazardous liquids into rivers. Sedimentation of water ways. Poor disposal of waste water from camp sites.
Climate Change	<ul style="list-style-type: none"> Increased levels of GHGs from vehicle emissions. Impacts of climate change to the project, e.g. flooding.



Potential Biological Impacts

Aspect	Potential Impact
Flora	<ul style="list-style-type: none"> Clearance of vegetation for road widening, borrow pits, construction camps and access roads. Illegal cutting of trees. Damage to trees and vegetation during construction.
Fauna	<ul style="list-style-type: none"> Destruction of habitat for road widening, borrow pits, construction camps and access roads. Blocking migration routes. Degradation of river habitat and associated impacts to fish and other aquatic fauna.
Protected Areas/Forests	<ul style="list-style-type: none"> Degradation of forests for road widening, borrow pits, construction camps and access roads.



Potential Socio-economic Impacts

Aspect	Potential Impact
Access	<ul style="list-style-type: none"> Construction works impeding access to properties and shops/businesses.
Noise	<ul style="list-style-type: none"> Elevated noise levels during both construction and operational phases of the project.
Traffic and Safety	<ul style="list-style-type: none"> Construction traffic accidents. Blasting during tunnel excavation and embankment works. Accidents to workers. Accidents involving the public at work sites.
Waste	<ul style="list-style-type: none"> Illegal dumping of solid and liquid waste. Poor management of hazardous waste leading to pollution of soil, groundwater and health impacts.
Cultural Heritage	<ul style="list-style-type: none"> Road encroaching on cemeteries and sites of cultural value.



Your Thoughts

